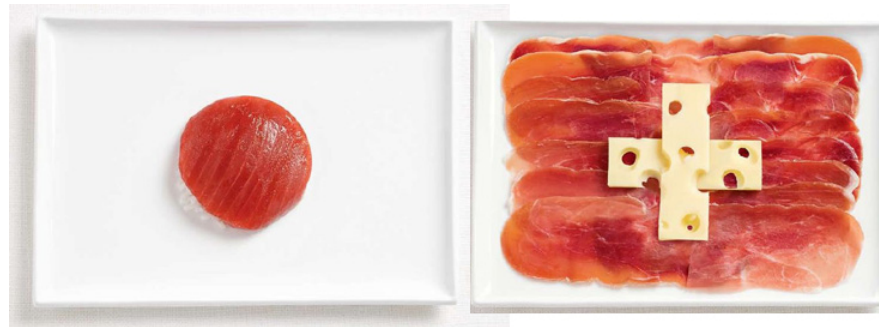




The 9th Annual EU Workshop at the University of Zurich



An International Workshop between the Sub-Major Curriculum EU-Japanology at the
Kansai University Graduate School of Letters
and the Section for East Asian Art History at the
University of Zurich

WORKSHOP PROGRAM

Seminar Room of the Section for East Asian Art History
Villa Schönberg, Gablerstrasse 14
Zurich, Switzerland

October 28, 2017

10:00 - 12:00 Survey of museums in Zurich

12:00 - 12:50 Lunch (Catered lunch in the Villa Schönberg Seminar Room)

Introductory Remarks

12:50-13:00 HARADA Masatoshi 原田正俊 (Professor, Kansai University)

Research Reports, Part 1

Chair: NAKATANI Nobuo 中谷 伸生 (Professor, Kansai University)

13:00-13:30 NISHIGAKI Eriko 西垣 江利子 (Kansai University)

クリストファー・ドレッサーのデザインにみられる日本美術工芸の影響
The London Exhibition of 1862 and Its Influence on the Designs of Christopher
Dresser (in English)

13:30-14:00 Jeanne FICHTNER (University of Zurich)

A Life for *Ars Una* – the Eduard von der Heydt Collection in St. Gallen (in English)



- 14:00-14:30 KŌ Ekei 高 絵景 (Kansai University)
江戸時代における唐様に明末書風変貌の影響
The Development of Late Ming Dynasty Calligraphic Styles and Its Influences on Edo
Period *karayō* Calligraphy (in English)

14:30-15:30 Pause with Viewing of Museum Rietberg

Research Reports, Part 2

Chair: Hans Bjarne THOMSEN (Professor, University of Zurich)

- 15:30-16:00 Klaus FRIESE (University of Zurich and University of Munich)
Aesthetics of War -- Textiles and other Examples of Material Culture from the Shōwa
Period (in English)
- 16:00-16:30 INOSE Ayumi 猪瀬あゆみ (Kansai University)
与謝蕪村筆《奥の細道図》の制作背景について
Information Relating to the Creation of *The Narrow Road to the Interior* by Yosa
Buson (in Japanese)
- 16:30-17:00 Anjuli RAMDENEE (University of Zurich)
Research on the Ryūkyū Kingdom Textile Collection at the Museum of Cultures,
Basel (in English)
- 17:00-17:30 Final Discussions
- 17:30-19:00 Closing Remarks, followed by Reception (Villa Schönberg Seminar Room)

October 29, 2017

(Limited to Workshop members and invited guests)

- 9:00-17:00 Research into the Recovery of Traces of the Iwakura Mission in Switzerland (1873)

The first day of this workshop is free and open to the public.
As space is limited, prior registration is recommended.
Please email alina.martimyanova@khist.uzh.ch to make a reservation.

Presentations will be in both Japanese and English.
For questions, please contact the Section for East Asian Art History.

Supported by the EU Center at the Graduate School of Letters, Kansai University,
the Section for East Asian Art, University of Zurich,
and by the Hochschulstiftung of the University of Zurich